



## Registration is now open!

The CFPC is pleased to be a partner in the Canadian Conference on Medical Education (CCME) taking place in Niagara Falls, Ontario, from April 13 to 16, 2019:

- [Register now!](#) This year's theme is "Disruption Driving Change: Would Sir William Osler Adapt?"
- [RSVP](#) for the CPFC's Celebrating Family Medicine Education reception on Monday April 15th at 5:00 p.m.
- Visit the CFPC booth to share your message about [#FMteaching](#).
- Celebrate family medicine award recipients Dr. Diane Clavet at the 2019 CCME Awards and Dr. Jane Thornton at the Resident Doctors of Canada awards.
- Extend your trip to attend [Creating Space IX](#), presented by the Canadian Association for Health Humanities, April 12 to 13, 2019, in Hamilton, Ontario.



CCME  
CCEM

[Read more ...](#)

### Latest blog

In our latest blog on the [Canadian Family Physician](#) website Dr. Brent Kvern, the CFPC's Director of Certification, Assessment and Examinations, reflects on teaching learners about using reassurance with patients.

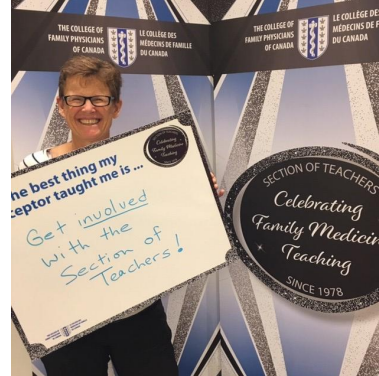


### Want to influence faculty development nationally?

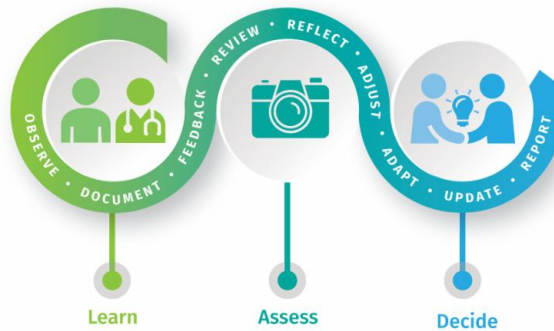
Are you a rural teacher or a teacher in their first five years of practice interested in faculty development? The [Faculty Development Education Committee](#) is looking for new members to join their dynamic team by April 1<sup>st</sup>.

[Get more information or join](#) the general interest group on faculty development.

Have an idea to share? [Submit](#) your blog to join the community sharing reflections on the past, present, and future of family medicine teaching.



## Spotlight on: Continuous Reflective Assessment for Training (CRAFT)



CRAFT is a cohesive approach to programmatic competency-based assessment for residents in training:

- Designed to meet the expectations of the **CanMEDS Roles** and the **Four Principles of Family Medicine** relative to the CFPC's competency-based residency training guidelines
- Involves a system of regular, if not daily, formative assessments of the learner in the workplace, accompanied by regular performance reviews with a consistent faculty adviser to reflect on progress and modify training as necessary
- Includes a robust description of assessable outcome competencies (**evaluation objectives**) and an in-training assessment (**ITA**) template

Get the full document [here](#)!

Contact: [education@cfpc.ca](mailto:education@cfpc.ca)

The Section of Teachers | The College of Family Physicians of Canada | 905 629 0900 |  
[education@cfpc.ca](mailto:education@cfpc.ca) | [www.cfpc.ca/SectionofTeachers/](http://www.cfpc.ca/SectionofTeachers/)

STAY CONNECTED

